



BRYAN SPEAR

SAMPLES

Carlson and Company

ADVERTISING



Take your mind to a picnic.

HISTORY.
ARCHITECTURE. ART.
WHERE STATE ROAD 66
MEETS THE WABASH AT
THE SOUTHWESTERN
EDGE OF INDIANA

Give your mind a real taste treat in New Harmony, Indiana. History comes along when you walk the streets where Rapp, Owen and Maclure piloted diverse experiments in society, education and science, where log cabins rub shoulders with the only North American building to be included in the Encyclopedia Britannica Yearbook, the New Harmony Atheneum.

CONTRASTS

An intellectual haven founded when Indiana was a territory. An early experimental kindergarten across the street from the New Harmony Tavern. The Maximilian-Bodmer Collection of their travels in the wilderness in the 1830s within hailing distance of the awesome architecture of the Atheneum, proclaiming its message to the twenty-first century. A day is not enough for the taste buds of the mind. Yesterday and tomorrow are waiting for you in New Harmony, Indiana. Surprises are always just around the corner.

NEW HARMONY

When your mind grows weary of the same old song.



▲ "Two Ravens" is one of 81 hand-colored lithographs in the New Harmony Maximilian-Bodmer Collection.



▲ The look of commercial Main Street in the New Harmony of the 1890s has been restored today. Shop in distinctive stores including the Gallery of Contemporary Art.

HARMONY

A definition: a pleasing or congruent arrangement of parts.

▼ Completed in 1979, the Atheneum is one of the most significant contributions to architectural design in America. It stands as a gateway linking the ideas of today with the twenty-first century.



Photo by Ezra Stoller




▲ Log cabins are part of the Historic New Harmony Inc. Tour embracing buildings built from 1775 to the present.



▲ The Raintree in bloom is one of the wonders brought by American scientists to New Harmony. Four natural science exhibits dramatize the early years, including the beginnings of the Smithsonian Institution.

For detailed information and ticketing, call or write:
Historic New Harmony, Inc.
New Harmony, Indiana 47631
(812) 682-4474
Open 9 am to 5 pm
daily year round.
Group rates
available.



 Historic New Harmony, Indiana



PROMOTIONAL POSTER

WANDER INDIANA

NORTHEAST

Simple life where it's leisurely. Dangle your toes in the clear warm water of Indiana lakes. Swim. Sail. Fish. In the winter, thrill to the rush of a Packageton ride. Skate. Snowmobile. Ski. Then warm yourself in front of a roaring fire. Settle back to the comforts of lake country. When you're longing for something more lively, head to the cities. Visit the museums, shops and restaurants. Amble along the old historic avenues. Whatever your interests, go ahead. Dive in. Sample the thousand pleasures of the northeast.

MUSEUMS FROM DREAM MACHINES TO THE GLORY OF THE SEA

Did you know Indiana was once the automotive capital of the U.S.? That Peru is still the circus capital of the world? And that one of the largest collections of Abraham Lincoln memorabilia is in Fort Wayne? Learn all this and more, right here, in the museums of the northeast.

ANDERSON FINE ARTS CENTER
258 W. Historical Rd. So., Anderson 46016, (317) 689-1248. (Madison) Art galleries, a theatre, concerts, workshops and lectures, housed in an elegant 1970s Classic Revival mansion. Open 10 am-5 pm Tue-Sat, 2-5 pm Sun. \$5.00.

AUBURN-CORD-DUESENBERG MUSEUM
1000 S. Wayne St., Auburn 46706, (219) 925-1444. (Dekalb) A rare treat for old car buffs. Over 120 classic, antique and special interest cars on one of the finest remaining examples of Art Deco architecture in the U.S. Other exhibits include "A Century of Fashion, 1850-1950," and "Hollywood and the Automobile." Open 10 am-5 pm (Oct-Apr), 9 am-5 pm (May-Sept). Annual Festival Labor Day Weekend.

JACK O. DIEHM MUSEUM OF NATURAL HISTORY
4915 Leslie Park Drive, Fort Wayne 46808, (219) 484-6279. (Allen) Over 60 displays of fish, animals and birds in their natural habitat. Open Tue-Sun, 10 am-5 pm in winter, 10 am-8 pm in summer.

FORT WAYNE MUSEUM OF ART
1202 W. Wayne St., Fort Wayne 46804, (219) 422-6667. (Allen) Over 1000 works of 19th and 20th century European and American art in an old Victorian mansion. Open Sat 1-5 pm, Tue-Thu 12-5 pm, Fri 11 am-5 pm and Sat 10 am-5 pm.

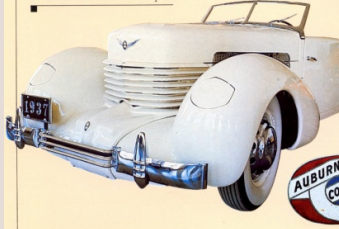
THE GLASS MUSEUM
309 S. Franklin St., Darke 47236, (317) 769-9926. (Hovell) Travel the century of glassware, jars and bottles on display. Much of the collection made in glass factories nearby. Open 10 am-5 pm Mon-Sat, 1-5 pm Sun.



GLORY OF THE SEA MUSEUM
Rt.2, Hartford City 47348, (317) 348-3429. (Blackford) Open Jan 1-Dec 1, 10 am-6 pm daily.

GREENWOOD GLASS MUSEUM
N. Merion Rd., Ellettsburg 48906, (317) 628-7511. (Hovell) See hundreds of glass pieces made in Greenhouses from 1894-1993 by the Indiana Lumber and Lumber Companies, including their famous "schoolie" and "golden age" glass. Open May 30-Sept 7, Tue-Sat 10 am-noon and 1-5 pm, Sun 1-5 pm.

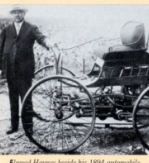
IN THE CRISPSTLE RESTORED SHOWROOM OF THE Auburn Cord Duesenberg Museum
"Automobiles that made Indiana the center of the automobile industry in the early 1900's."



GRISWOLD AIR FORCE BASE AIRCRAFT MUSEUM
State Highway 31, 48971, (317) 699-5211. (Miami) Home of the Strategic Air Command. Call a month in advance to arrange for a tour.



B-35 Bomber, which appeared on the movie "Catch 22," on display at Grissow AFB.



Elwood Hayes stands his 1894 automobile.

LOUIS A. WARREN LINCOLN LIBRARY AND MUSEUM
1205 S. Clinton St., Fort Wayne 46801, (219) 427-3984. (Allen) See the flag which draped Lincoln's box at the Fort Trenchard, photographs, letters—over 60 exhibits in all. Open May-Nov. 8 am-4:30 pm Mon-Fri, 10 am-4:30 pm Sat, Nov-May 8 am-4:30 pm Mon-Thu, 8 am-12:30 pm Fri.

MIAMI COUNTY HISTORICAL MUSEUM
Fourth Floor, Courthouse, Peru 46970, (317) 472-3075. (Miami) Pioneer and circus relics, and dragonfly collection owned by Cole Porter's father, Samuel Porter. Open 9 am-noon, 1-4 pm Mon-Fri.

PETERSBURG MUSEUM
11 N. Hamilton St., Peru 46970, (317) 482-3865. (Miami) Pioneer relics, antiques and circus exhibits. Open May-Sept, 9 am-noon, 1-4 pm Mon-Sat.

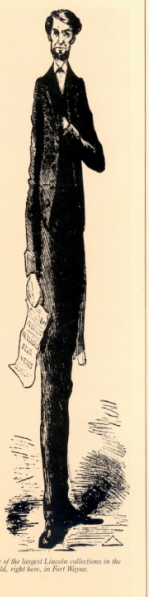
RUTHER MUSEUM
202 E. Beardslee, Ellettsburg 46534, (219) 264-0230. (Ellettsburg) Enter the elegance of Education America. This museum, built in 1908 by Albert K. Beardsley in memory of his only child, Ruth, is a combination of beaux arts and Midwestern Prairie School architecture. Open Apr-Dec 11, Tue-Fri, noon-11 am, 1 pm-3 pm and Wed at 7 pm.

STUBEN COUNTY HISTORICAL SOCIETY
601 W. Main and 113 E. Main, Anderson 46016, (219) 695-2434. (Shenandoah) Three two-story, 18th Century House and Chimney Monument, contain historic relics from the area. Open May-Oct, 2-4 pm Sun.

WABASH COUNTY HISTORICAL MUSEUM
29 W. Hill St., Ellettsburg 48906, (317) 565-9308. (Wabash) See the Edison display, best collection, Miami Indian artifacts and local lore in this Romanesque Revival building. Open Mon-Fri 9 am-1 pm.

WHITLEY COUNTY HISTORICAL MUSEUM
106 W. Jefferson St., Columbus City 46725, (219) 244-6372. (Whitley) Home of former U.S. Vice President and Indiana Governor Thomas Marshall. Open Sun 2-5 pm.

WENDELL L. WILKIE MUSEUM AND CIVIC CENTER
1430 Main St., Ellettsburg 46508, (317) 532-8986. (Madison) Wendell Wilkie memorabilia in a fine old Richardson Romanesque building. Open Mon-Fri 1-5 pm, Sat and Sun by appointment.



One of the largest Lincoln collections in the world, right here in Fort Wayne.

NORTHEAST

CIRCUS CITY MUSEUM
154 N. Broadway, Peru 46970, (317) 472-3978. (Miami) Delight in the intricacies of miniature circuses, the bright colors of costumes of the stars gaze by. Memorabilia from the Wallace Circus Train, a wild animal cage, photographs, even a flying trapeze. If you can, plan your trip the third week in July, during the Grand Circus Festival. In this, the circus capital of America. Museums open 9 am-5 pm daily.



CLOWN right up for one of the finest collections of circus relics in the world.

CLIVER ACADEMY
CEP, Ed., Colver 46521, (219) 842-5511. (Madison) You'll love the grand finale the colors, hear the bands. Every Sunday afternoon, May through Oct.

FASHION FARM
Ligoniewitz Rd., 1 mile west of Ligoniewitz 46737, (219) 904-4499. (Noble) Natural dyes a Red Bull cow, W.B. Fashion, this farm has a genuine, unique, fashionable gift shop, "Old Ligoniewitz Jail," and Fashion Mall to tour. In October, it is transformed into Pumpkin Fantasyland, with over 100 displays of animals and people made from pumpkins, squash and gourds. Open summer 7 am-9 pm, winter 8 am-8 pm.

Copper-clip of Cliver.

FORT WAYNE CHILDREN'S ZOOLOGICAL GARDENS
311 S. Harrison Blvd., Fort Wayne 46808, (219) 483-7914. (Allen) Observe animals up close on the 22 new African veldt. Open Mon-Sat 9 am-5 pm. Sun and holidays 9 am-5 pm. July-Aug 9 am-noon.

FUN SPOT PARK
Lake James, Crooked Lake Exit off I-49, County Road 200 W., Angola 46808, (219) 832-2972. (Shenandoah) Roller, go-karts, 14-hole miniature golf, bumper cars, electronic games. Open Memorial Day Weekend through Labor Day, 10 am-11 pm.

HISTORIC FORT WAYNE
107 S. Clinton St., Visitor Center 211 S. Barr St., Fort Wayne 46802, (219) 424-3470. (Allen) Talk with French traders and the British, Little Turtle and Mad Anthony Wayne. Explore the log barracks and Indian encampments; meet the soldiers and soldiers of that day. Open mid-April, 7 days a week, 9 am-5 pm.



THE LITTLE RIVER RAILROAD
P.O. Box 178, Angola 46702, (219) 825-0182. (Shenandoah) Special events include staged train rallies, "Ride from Pleasant Lake to Angola and back, every weekend from Memorial Day through mid-Oct. at 1:30 pm. Take a ride on an old passenger train, pulled by the little steam engine that could.

INTERNATIONAL PALACE OF SPORTS
North Webster 46558, (219) 834-2631. (Blackford) The Center of Sports. This modern King Arthur castle has crowned such sports exhibitions as Bruce Jenner, A.J. Foyt and Hank Aaron as "King of Sports." Open May-Sep, Fri-Sun noon-9 pm.

MUNCIE CHILDREN'S MUSEUM
519 S. Walnut St., Muncie 47305, (317) 286-1609. (Delaware) "Hands on" exhibits for kids. Open Tue-Sat 10 am-5 pm.

ST. CLAIR GLASS WORKS
408 S. 24th St., Ellettsburg 48906, (317) 552-5945. (Madison)

ST. CLAIR HOUSE OF GLASS
552-0441. (Madison) Watch craftsmen make glass lamps, vases and art objects by hand in these two factories. Open Mon-Fri 9 am-3 pm. Glass Festival the third week in August each year.

SINCLAIR SHOPS
1000 W. Washington St., Hartford City 47348. In Indiana's tall-fine 1-800-302-8645. Out of state: (317) 348-2070. (Blackford) Watch skilled craftsmen and women at a restored 1870 wagon wheel factory. Learn woodturning, pottery making, stained glass and glass decorating, candlemaking, printing and woodchiseling. Tues-April, by appointment.

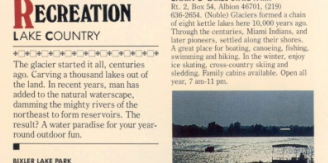
WAGON WHEEL PLAYHOUSE
Route 30 East, Warsaw 46896, (219) 267-5941. (Harrison) Shows, food and fish on the road, with shows nightly all summer long, from June 16-Sept 5. Showtime at 8 pm. Tue-Sat, 7:30 pm Sun.

RECREATION LAKE COUNTRY



CHANDLER LAKES STATE PARK
Rt. 2, Box 54, Albion 46701, (219) 639-2654. (Delaware) Glaciers formed a chain of eight kettle lakes here 10,000 years ago. Through the centuries, Miami Indians, and later pioneers, settled along their shores. A great place for boating, canoeing, fishing, swimming and hiking. In the winter, enjoy ice skating, cross-country skiing and sledding. Family cabins available. Open year. 7 am-11 pm.

BIXLER LAKE PARK
P.O. Box 516, Kendallville 46755, (219) 247-1064. (Delaware) Tennis, boat and fish on the 120 acre lake. Camp or picnic on the 170 acres of this city park; play tennis, basketball and softball. Or play on the member-hut at the playground. Open year round.



See the brilliance of a summer sunset as crimson reflection shimmering across the water.

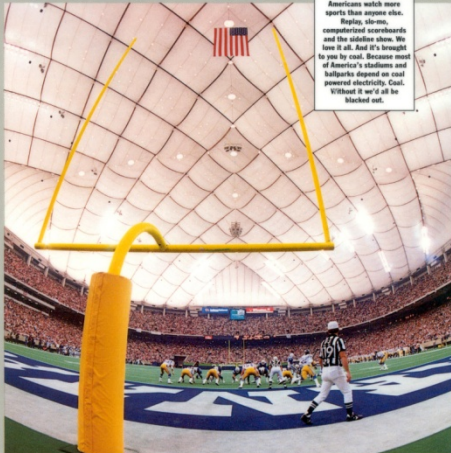


When Lindy flew to Paris it took him 23 1/2 hours. Lindy checked his instruments by flashlight, and found himself with sandwiches. Air travel has improved dramatically in 60 years. Today, you can fly New York to Paris in less than three hours. Some times driving Indianapolis to Chicago. We expect fast transportation, and that means flying around the clock, with landing lights and vital flight information services to guide your pilot through a maze of metropolitan electricity. And many American airports depend upon coal fired electric power to provide the lights to land you safely on the runway. We coal, the fuel that provides electric power generation to more than half of the country. Coal powered electricity. It sure beats coming in as a wing and a prayer.

Routine landing. Made possible by coal.

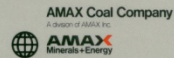


Amex Coal Company, Indianapolis, Indiana. Indiana Equal Employment Opportunity Employer M/F/H.



Sports. Our passion and our passion. When we're not participating, we're watching. At the stadium, in a weather-sheltered dome, or via TV from the comfort of home. We follow footballs, from throw, 500' and Frosty Flap. The Broncos, Bengals, Browns and Browns. Americans watch more sports than anyone else. Replay, slow-mo, computerized scoreboards and the sideline show. We love it all. And it's brought to you by coal. Because most of America's stadiums and ballparks depend on coal powered electricity. Coal. Without it we'd all be blacked out.

First and goal. Made possible by coal.



Amex Coal Company, Indianapolis, Indiana. Indiana Equal Employment Opportunity Employer M/F/H.



Not all of us will undergo surgery, but others are a loved one will. Perhaps a coronary bypass will save your life. Or maybe your eight year old will need a simple tonsillectomy. No procedure seems simple when it's someone you care about lying in the operating room depending upon respirators, heart monitors, and other life-sustaining apparatus. Many American hospitals depend on coal to light rooms, warm nurseries and support life. Surgeries! Coal fuels even full the electric power across the nation. Coal. Without it a surgical incision could be just a stab in the dark.

Five hours in O.R. Made possible by coal.



Amex Coal Company, Indianapolis, Indiana. Indiana Equal Employment Opportunity Employer M/F/H.

MARGUERITE LILLY NOYES CHILDREN'S PAVILION
INDIANAPOLIS, INDIANA



A

**NEW NAME—
RENEWED DEDICATION**

A teddy bear, a tricycle, building blocks and rocking horse. The larger-than-life mural makes a big first impression, welcoming patients, families and visitors to the Marguerite Lilly Noyes Children's Pavilion.

We offer comprehensive care to young people. We are a full-service hospital which provides compassionate attention and the most advanced medical skills.

A HISTORY OF FIRSTS

Our children's hospital was the first hospital in Indiana to have a specialist (a neonatologist) on staff for the treatment of ill newborns. Now we have two.

Other pediatric "firsts"

- First Newborn Intensive Care Unit in Indiana
- First pediatric intensivist (specialist in care of critically ill children) in Indiana
- Only accredited Pediatric Ambulatory Center in the country within a teaching institution
- One of only two fully accredited pediatric residency programs in Indiana
- First, and only, pediatric intensive care Fellowship program in Indiana
- First hospital in Indiana to provide helicopter and fixed-wing transport service for critically ill children with Methodist Hospital's Life Line program
- First hospital in Indiana to provide emergency ambulance transport service for critically ill infants and children
- Most experienced hospital in the world with lithotripsy treatment (kidney stone crusher) for children

PERSONALIZED CARE

The Marguerite Lilly Noyes Children's Pavilion is large enough to attract many childcare specialists while continuing to give personal family-centered care. While your child is in the Pavilion, he or



We are the only private children's hospital in the state of Indiana and have been pioneers in providing health care to infants, children and adolescents.



Life Line • Pediatricians accompany both the Life Line medical team and ambulance personnel in transporting critically ill patients to the Marguerite Lilly Noyes Children's Pavilion. About one-third of all Life Line transports are children or adolescents.

critical problems that still require close nursing and medical observation. The PICU offers helicopter service and emergency ambulance transportation for critically ill children throughout the state.

NEWBORN INTENSIVE CARE

The Regional Center for Mothers and Babies, within the new 1701 N. Senate Blvd. Building, includes the 45-bed Newborn Nursery, the 27-bed Newborn Intensive Care Unit and an obstetrical service which delivers almost 4,000 babies annually. Critically ill newborns are cared for in the Newborn Intensive Care Unit. Two full-time neonatologists work with the largest group of practicing pediatricians in Indiana, providing continuous medical care to newborns.

PATIENT SUPPORT SERVICES

Personnel from our many ancillary departments, such as laboratory, physical therapy, radiology and dietary, are specially trained and experienced in caring for children. Our staff truly enjoys working with children and is dedicated to making your child's hospitalization the least stressful possible.

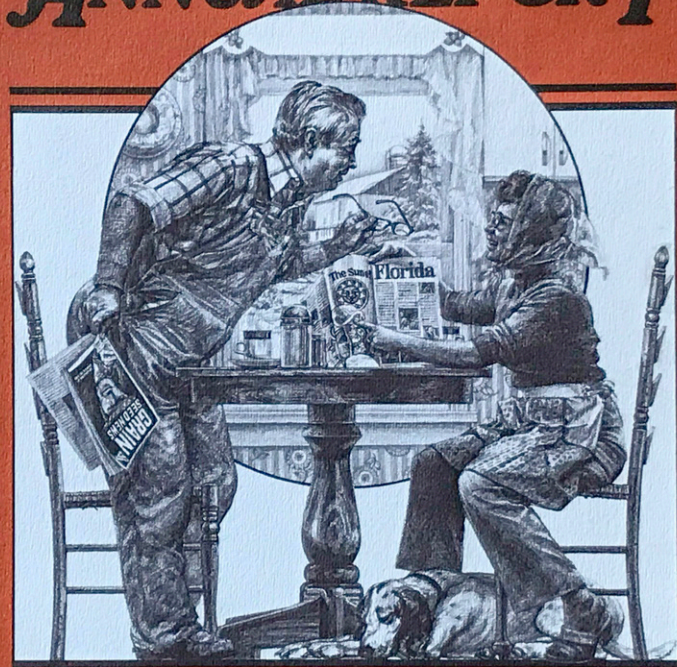
PARENT ADVISORY BOARD

The Parent Advisory Board acts as an advisory resource group to the staff and administration of the hospital and to the community. The members serve as advocates for the children and their families.

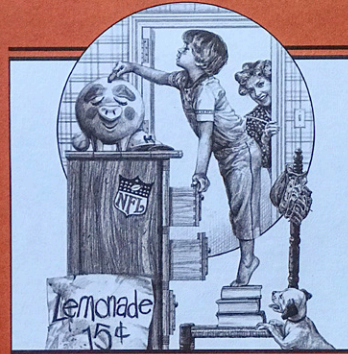


Labor and Delivery, Post-Partum, the Newborn Intensive Care Unit, and Regular Nursery are located close together to facilitate interaction among pediatricians, obstetricians, parents and newborns. Neo-fights is a support group of parents who share their caring and experiences for families of premature and critically ill newborns.

ANNUAL REPORT



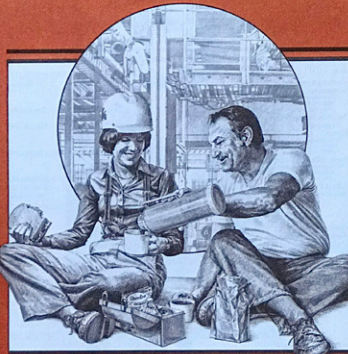
1 9 8 0
HENRY COUNTY SAVINGS & LOAN ASSOCIATION



It's an American tradition. The pennies earned in a child's first income start out as two cents deposited in a savings account to finance tomorrow's dreams.

STATEMENTS OF CONDITION

Assets	December 31, 1980	December 31, 1979
Cash on hand and in banks	6,223,211.30	\$ 7,118,913.52
Investment securities — at amortized cost		
Revenue securities		
F.H.L.C. secondary reserve	9,549,728.24	10,858,916.68
Stock in Federal Home Loan Bank of Indianapolis — at par value	1,548,100.00	1,548,100.00
Loans		
1980 — \$18,684,246	173,485,820.10	159,436,964.63
1979 — \$18,684,246		
Land, office buildings, and equipment — at cost		
F.H.L.C. secondary reserve	2,804,356.08	2,956,260.47
F.H.L.C. secondary reserve	9,199,344.41	3,740,077.87
Other assets	583,211.21	706,864.40
Total Assets	\$194,009,843.28	\$183,000,057.57
Liabilities		
Savings accounts	\$173,208,718.16	\$160,863,171.03
Undisbursed loans in process	920,491.02	1,198,339.67
Accrued interest on savings accounts	1,080,452.99	966,141.29
Advances from Federal Home Loan Bank of Indianapolis and other borrowed funds	—	2,000,000.00
Federal income taxes	109,595.24	79,951.52
Other liabilities and deferred income	634,343.46	532,136.89
General reserves and undivided profits		
Federal insurance reserve	8,765,000.00	8,220,000.00
Undivided profits	9,199,344.41	8,110,317.17
Total	17,964,344.41	17,330,317.17
Total Liabilities	\$194,009,843.28	\$183,000,057.57



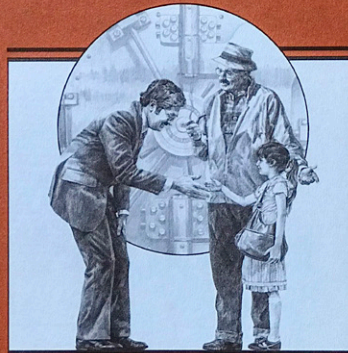
All of us work to pay for the important things in life. Making people's hard earned dollars work even harder for them is our job.

STATEMENTS OF INCOME

	Year Ended December 31, 1980	
Revenues:	\$13,078,473.74	\$13,966,620.27
Interest on loans		1,351,268.08
Interest on investment securities and bank time deposits	2,209,214.62	2,772,841.31
Interest on F.H.L.C. secondary reserve	27,722.81	29,263.95
Dividends on Federal Home Loan Bank stock	449,027.47	1,401,065.08
Service and processing fees	444,815.71	389,134.29
Other revenues	179,674.71	1,471,458.92
Gross Revenue	15,088,355.06	15,923,512.59
Costs and Expenses:		
Operating expenses	2,884,772.66	2,658,708.69
Interest on advances from Federal Home Loan Bank and other borrowed funds	123,103.77	302,667.52
Interest on savings accounts	142,102,744.55	11,677,711.20
Federal income taxes	240,000.00	567,500.00
	17,368,432.28	14,506,587.41
Net Operating Income	629,907.78	1,416,925.18
Other Charges and Credits:		
Recovery of losses (losses) on loans and real estate owned and in judgment	4,119.46	(15,978.74)
Gain (loss) on disposal of property and equipment	—	(11,861.85)
	4,119.46	(25,841.59)
Net Income	\$ 634,027.24	\$ 1,390,983.59

DIRECTORS, OFFICERS AND EMPLOYEES

Our Directors	
Paul W. Fisher Chairman	C. William Bailey Vice President
Donald C. Davidson Vice President	Robert N. Jennings Vice President
William A. Miller, M.D. Vice President	Charles C. Prewitt Vice President
Greenfield Advisory Committee	
Jack S. Weisberg Executive Vice President, Long Metropolitan Bank	Robert L. Lankford Lombard and Lewis
Richard M. Patten Center	Richard M. Patten Richard Robinson
Officers	
Paul Fisher President	Edward Robinson Assistant Vice President
Keith Korte Vice President	Thomas Kenny Assistant Vice President
Donald M. Koch Vice President	James H. Gresham Assistant Vice President
James D. Moore Vice President	Samuel W. Frazier Assistant Vice President
Joseph A. Mitchell Vice President	James H. Gresham Assistant Vice President
Employees	
John A. McRae Branch Manager	John A. McRae Branch Manager
James H. Gresham Assistant Vice President	James H. Gresham Assistant Vice President
Thomas Kenny Assistant Vice President	Thomas Kenny Assistant Vice President
Edward Robinson Assistant Vice President	Edward Robinson Assistant Vice President
Samuel W. Frazier Assistant Vice President	Samuel W. Frazier Assistant Vice President
Richard M. Patten Center	Richard M. Patten Center
Jack S. Weisberg Executive Vice President, Long Metropolitan Bank	Jack S. Weisberg Executive Vice President, Long Metropolitan Bank



Saving for the future is a value families teach their children generation after generation. Something a grandfather teaches his granddaughter where he belongs her to to open an account.

